

13,000 元

Reference
> 2000 篇

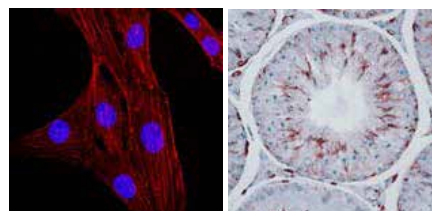


Internal control

Anti-Actin Antibody, clone C4 #MAB1501

- 泛肌動蛋白抗體，會與泛肌動蛋白的 globular (G) & fillimentous (F) forms 反應，但不會干擾肌動蛋白聚合
- 每批經過 WB 確認專一性
- 動物的肌動蛋白
- 超過 2000 篇論文採用，公認最佳的 internal control

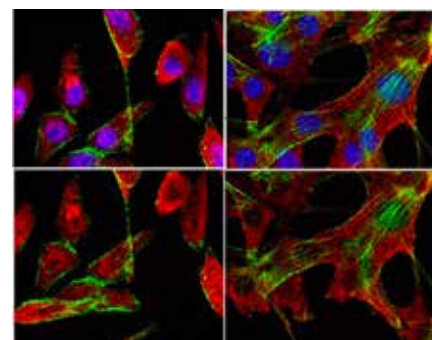
Species	Key	Host	Format	Type
Reactivity	Applications			
A	ELISA, ICC, IF, IHC, IH(P), WB	M	Ascites	Monoclonal Antibody



Anti-GADPH Antibody, clone 6C5 #MAB374

- 廣泛應用於各種實驗的 internal control
- 不會與 *E. coli* 的 GAPDH 反應
- 每批經過 WB 確認專一性，超過 2000 篇論文採用

Species	Key	Host	Format	Type
Reactivity	Applications			
Ca, H, M, R, Rb, F, Fe, Po	ELISA, IP, ICC, IF, IHC, WB	M	Purified	Monoclonal Antibody



HeLa

NIH/3T3



熱賣二級抗體

Goat Anti-Rabbit IgG Antibody, HRP Conjugated #AP132P

Application Notes

ELISA and WB: 1:5,000-1:100,000

IHC: 1:500-1:5,000

Goat Anti-Mouse IgG Antibody, HRP Conjugated #AP124P

Application Notes

ELISA and WB: 1:5,000-1:100,000

IHC: 1:500-1:5,000