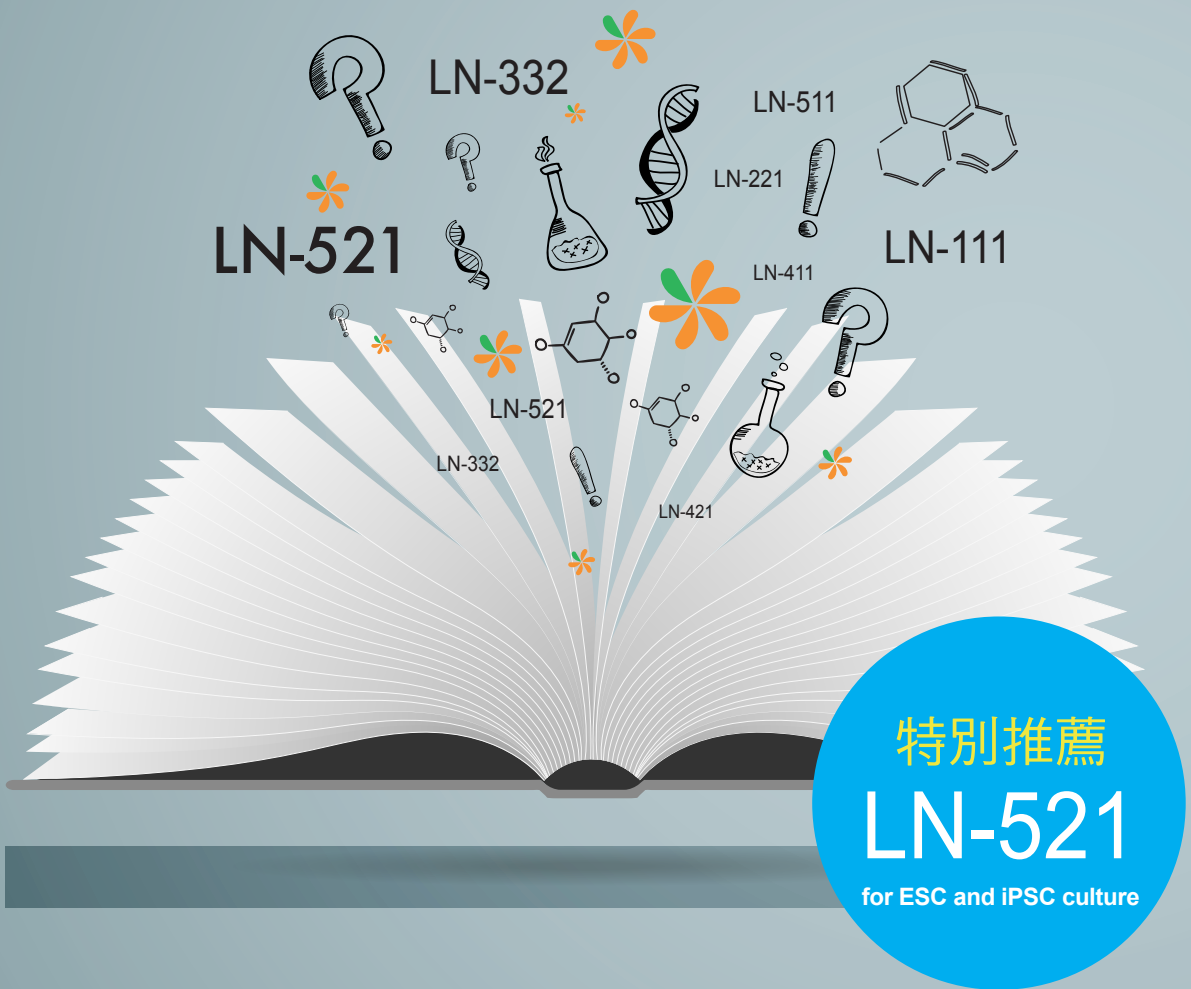


LAMININ LIBRARY

for CELL CULTURE



特別推薦
LN-521
for ESC and iPSC culture

REVOLUTIONARY CULTURE

for Embryonic Stem Cell & Induced Pluripotent Stem Cell

Laminin 是 Basement membranes 的主要成分之一，負責協助細胞進行多種生理功能，包括 adhesion, migration, chemotaxis, growth, 以及 differentiation，甚至 neurite outgrowth 都可刺激其生長。



BioLamina 為本公司最新代理品牌，主要提供 ECM – laminin 系列蛋白，為人類重組 laminin 蛋白，其中，人類重組 Laminin-521 蛋白，完全適用於人類胚胎幹細胞 (hESC) 及人類 (hiPSC) 培養。



Direct link to LN-521™
information online

LN-521

讓你輕鬆並有效的進行單一細胞繼代培養 (Single-Cell Passaging)

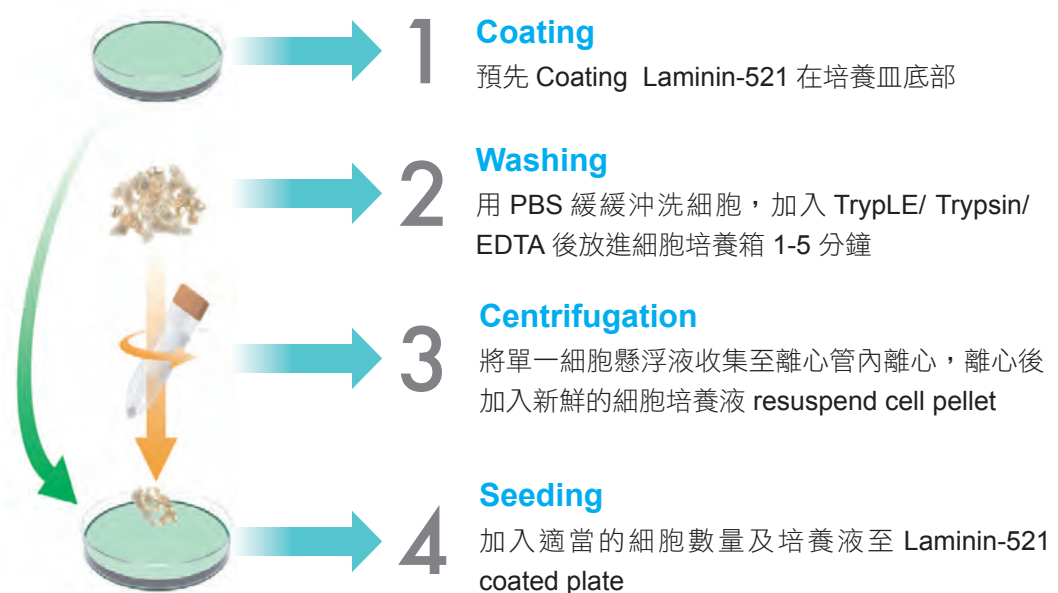
不需額外添加

高生長速度

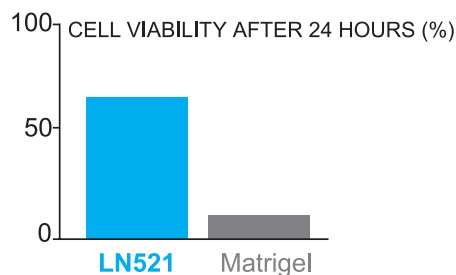
高存活率

配製單細胞懸浮液時，在有 laminin-521 存在的情況下，無需添加任何抑製劑就可增加胚胎幹細胞的存活率。實驗證明，在 laminin-521 上細胞的生長速度是 Matrigel 的 2 倍，使用 laminin-521 時，讓培養的方法完全簡化，不須再用顯微鏡底下挑出分化的細胞，不用添加其他生長因子及抑制劑。

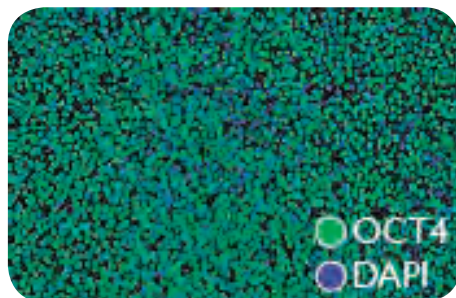
Laminin allows an easy, fast and forgiving splitting procedure



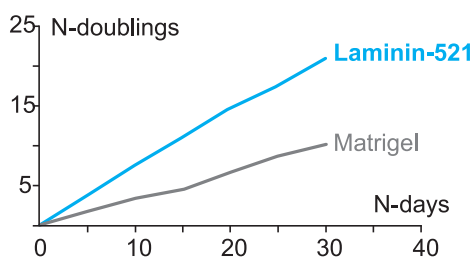
高細胞存活率



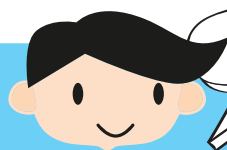
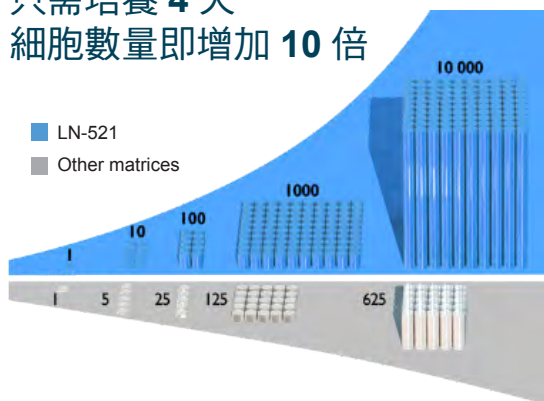
維持細胞特性



細胞生長速度高於 Matrigel



只需培養 4 天 細胞數量即增加 10 倍

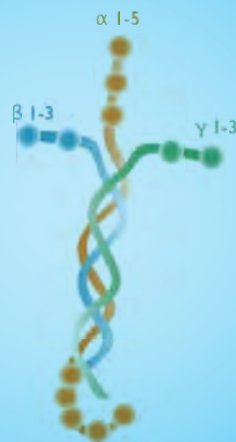


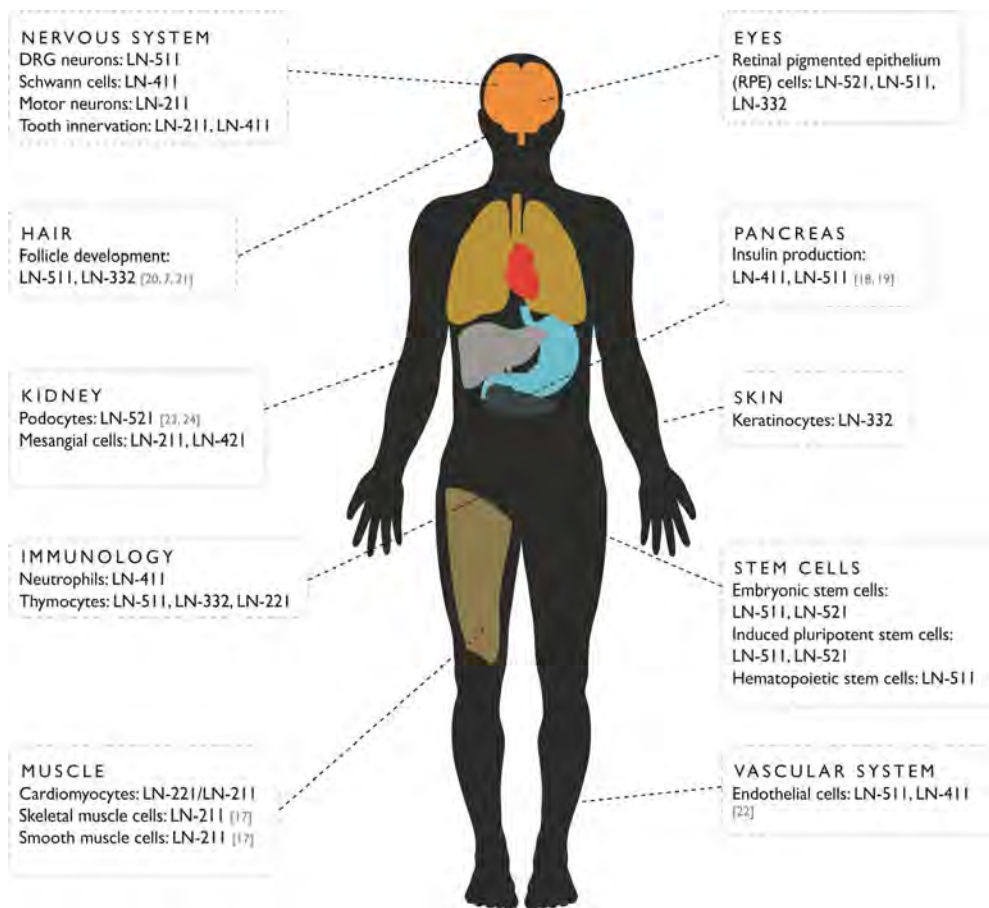
Laminin 檔案

Laminin 由一條重鏈 (α) 和二條輕鏈 (β 、 γ) 交聯而成，外形呈十字形，每條鏈又有不同的 isoforms，因而組成結構不同的 laminins

醫學小常識

在 basement membrane 的所有成份中，包括 collagen, fibronectin, laminin 等，**laminin 是**“唯一”具有組織特異性的蛋白，所以正確的 laminin isoforms 可以提供細胞更貼近生理環境，使其穩定良好的生長。





REFERENCES

- Spencer VA, Xu R, Bissell MJ. Gene expression in the third dimension : the ECM-nucleus connection. *J Mammary Gland Biol Neoplasia*. 2010; 15(1):65-71.
- Xu R, et al. Sustained activation of STAT5 is essential for chromatin remodeling and maintenance of mammary-specific function. *J Cell Biol* 2009;184(1):57– 66.
- Klaffky E, et al. Trophoblast-specific expression and function of the integrin alpha 7 subunit in the peri-implantation mouse embryo. *Dev Biol*. 2001;239(1):161-175.
- Domogatskaya A, et al. Laminin-511 but not -332, -111, or -411 enables mouse embryonic stem cell self-renewal in vitro. *Stem Cells*. 2008; 26(11):2800-9.
- Rodin S, et al. Long-term self-renewal of human pluripotent stem cells on human recombinant laminin-511. *Nat Biotechnol*. 2010; 28(6):611-5.
- Rodin S, et al. LN-521 permits chemically defined and xeno-free derivation, clonal survival and expansion of human pluripotent cells. Submitted.
- Patton BL, et al. Distribution of ten laminin chains in dystrophic and regenerating muscles. *Neuromuscul Disord*. 1999; 9(6-7):423-33.
- Nikolova G, et al. The vascular basement membrane: a niche for insulin gene expression and Beta cell proliferation. *Dev Cell*. 2006 Mar;10(3):397-405.
- Otonkoski T, et al. Unique basement membrane structure of human pancreatic islets: implications for beta-cell growth and differentiation. *Diabetes Obes Metab*. 2008; 10 Suppl 4:119-27.
- DeRouen MC, et al. Laminin-511 and integrin beta-1 in hair follicle development and basal cell carcinoma formation. *BMC Dev Biol*. 2010; 10:112.
- Li J, et al. Laminin-10 is crucial for hair morphogenesis. *EMBO J*. 2003; 22(10):2400-10.
- Hallmann R, et al. Expression and function of laminins in the embryonic and mature vasculature. *Physiol Rev*. 2005; 85(3):979-1000.
- Miner JH and Li C. Defective glomerulogenesis in the absence of laminin alpha5 demonstrates a developmental role for the kidney glomerular basement membrane. *Dev Biol* 2000; 217(2):278-89.
- Sorokin LM, et al. Differential expression of five laminin alpha (1-5) chains in developing and adult mouse kidney. *Dev Dyn*. 1997; 210(4): 446-62.



Laminin-521(100 ug)

\$4,900

自由混搭

更經濟

更好用

PSGro hESC/iPSC Medium
(SBI SC500M-1)

+

Laminin-521 (100 ug)

\$13,530

PluriSTEM Human ES/iPS
(Millipore SCM130)

+

Laminin-521 (100 ug)

\$13,400

PluriSTEM-XF Human ES/iPS
(Millipore SCM132)

+

Laminin-521 (100 ug)

\$15,400

Product	Prod No.	Quantity
Laminin-521	LN521-02	100 μ g
	LN521-03	1 mg
	LN521-04	5 mg
Laminin-511	LN511-01	20 μ g
	LN511-02	100 μ g
	LN511-03	1 mg
Laminin-421	LN421-01	20 μ g
	LN421-02	100 μ g
	LN421-03	1 mg
Laminin-411	LN411-01	20 μ g
	LN411-02	100 μ g
	LN411-03	1 mg
Laminin-332	LN332-01	12 μ g
	LN332-02	60 μ g
	LN332-03	0.6 mg
	LN332-04	3 mg

Product	Prod No.	Quantity
Laminin-221	LN221-01	20 μ g
	LN221-02	100 μ g
	LN221-03	1 mg
	LN221-04	5 mg
Laminin-211	LN211-01	20 μ g
	LN211-02	100 μ g
	LN211-03	1 mg
	LN211-04	5 mg
Laminin-111	LN111-01	20 μ g
	LN111-02	100 μ g
	LN111-03	1 mg
	LN111-04	5 mg
521-To-Go	PC521-01	1 x Plate
	PC521-02	5 x Plate
	PC521-20	20 x Plate
LAMscreen	KT2002	132 μ g
FREEZEstem	ME550	10 ml
CLONEstem-To-Go	PCLLO-01	1 x Plate
	PCLLO-05	5 x Plate