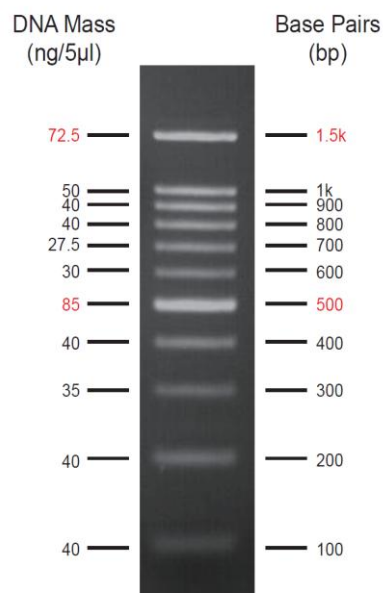


- Catalog : DM100
- Package : 500 µl
- Storage : Stable at 4°C for up to 6 months.
For long term storage, store at -20°C (for up to three years).

Description	The DNA Ladder DM100 is composed of 11 individual DNA fragments: 1.5k , 1k, 900, 800, 700, 600, 500 , 400, 300, 200, and 100 base pairs. This product contains two enhanced bands (1.5k and 500 bp) for easy reference.
Quality Control	<p>*Defined 11 bands are formed during the electrophoresis on the agarose gel.</p> <p>*No nuclease activity is observed by a direct nuclease activity assay.</p>
Application Note	<p>*The ladder is supplied in gel loading buffer and is ready to use. Do not heat or dilute before loading.</p> <p>*This DNA Ladder was not designed for precise quantification of DNA mass, but can be used for approximating the mass of DNA by intensity comparison.</p>
Formulation	<p>The ladder is ready-to-use, which is premixed with loading buffer dye for direct loading on gel.</p> <p>10 mM Tris-HCl (pH 8.0), 10 mM Na-EDTA, 0.03% orange G, 0.005% xylene cyanol FF, and 10% glycerol.</p>
Instruction	5 µl per well is recommended.



For research use only.