

•Catalog : PMB1

•Package : 250 µl*2

•Storage : Stable at 4°C for up to 3 months.

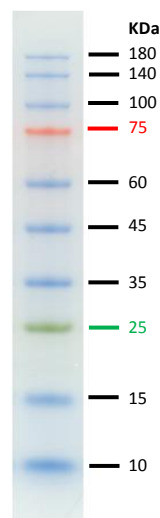
For long term storage, store at -20°C (for up to three years).

Description	<p>ANTEC 3-color Pre-Stained Protein Marker is a three-color protein standard with 10 pre-stained proteins covering a wide range molecular weights from 10 to 180 KDa. Proteins are covalently coupled with a blue chromophore except for two reference bands (one green and one red band at 25 kDa and 75 kDa respectively) when separated on SDS-PAGE (Tris-glycine buffer).</p> <p>ANTEC 3-color Pre-Stained Protein Marker is designed for monitoring protein separation during SDS-polyacrylamide gel electrophoresis, verification of Western transfer efficiency on membranes (PVDF, nylon, or nitrocellulose) and for approximating size of proteins.</p>
Quality Control	<p>ANTEC 3-color Pre-Stained Protein Marker resolves 10 major bands in 15% SDS-PAGE (Tris-glycine buffer) and after Western blotting to nitrocellulose membrane.</p>
Application Note	<p>*The ladder is supplied in gel loading buffer and is ready to use.</p> <p>*Do not heat, dilute, add reducing agent before loading.</p>
Formulation	<p>The ladder is ready-to-use, which is premixed with loading buffer dye for direct loading on gel. Approximately 0.1~0.4 mg/ml of each protein in the buffer. 20 mM Tris-phosphate, pH 7.5 (at 25°C), 2 % SDS, 0.2 mM Dithiothreitol, 3.6 M Urea, and 15 % (v/v) Glycerol.</p>
Instruction	<p>*3 µl or 5 µl per loading for clear visualization during electrophoresis on 15-well or 10-well mini-gel, respectively.</p> <p>*1.5~2.5 µl per well for general Western transferring.</p> <p>*Apply more for thicker (> 1.5 mm) or larger gel.</p>
Application Tested	<p>Guide for Molecular Weight Estimation (KDa)</p> <p>Migration patterns of 3-color Pre-Stained Protein Marker in different electrophoresis conditions are listed below:</p>

Band	Color	TRIS-GLYCINE	BIS-TRIS (MOPS)	BIS-TRIS (MES)
1	Blue	180	170	170
2	Blue	140	130	130
3	Blue	100	93	93
4	Red	75	70	72
5	Blue	60	53	53
6	Blue	45	40	42
7	Blue	35	30	30
8	Green	25	22	23
9	Blue	15	14	14
10	Blue	10	9	10

Note. The apparent molecular weight (KDa) of each protein has been determined by calibration against an unstained protein standard; supplemental data should be considered for more accurate adjustment in different electrophoresis conditions.

3-color Protein Marker



For research use only.